
DEPARTMENT OF THE ARMY TECHNICAL MANUAL

**ORGANIZATIONAL MAINTENANCE REPAIR PARTS
AND SPECIAL TOOLS LIST
FOR
ATTITUDE CONTROL TEST SET
TS-1656/ASW-12 (V)**

Headquarters, Department of the Army, Washington, DC
29 March 1974

Current as of 15 December 1972

	Paragraph:	Page:
SECTION I. INTRODUCTION		
Scope	1 - 1	1-1
General	1-2	1-1
Explanation of columns	1-3	1-1
Special information	1-4	1-2
Location of repair parts	1-5	1-2
Federal supply codes for manufacturers	1-6	1-2
Reporting of equipment publication improvements	1-7	1-2
II. REPAIR PARTS FOR ORGANIZATIONAL MAINTENANCE		2-1
III. SPECIAL TOOLS, TEST AND SUPPORT EQUIPMENT FOR ORGANIZATIONAL MAINTENANCE (Not applicable)		
IV. INDEX -FEDERAL STOCK NUMBER AND REFERENCE NUMBER CROSS-REFERENCE TO FIGURE AND ITEM NUMBER OR REFERENCE DESIGNATION (Not applicable)		
V. INDEX-REFERENCE DESIGNATION CROSS-REFERENCE TO PAGE NUMBER (Not applicable)		

This manual supersedes so much of TM 11-6625-443-12P, 17 January 1962, as pertains to TS-1656/ASW-12(V).

SECTION I

INTRODUCTION

1 - 1 . S c o p e

This manua lists repair parts required for the performance of organizational maintenance of the TS-1656/ASW-12(V).

1-2. General

This Repair Parts List is divided into the following sections:

a. Repair Parts -Section *II*. A list of repair parts authorized for the performance of maintenance at the organizational level.

b. Special Tools, Test and Support Equipment for Organizational Maintenance -Section *III*. Not applicable.

c. Index-Federal Stock Number and Reference Number Cross-Reference to Figure and Item Number or Reference Designation Section *IV*. Not applicable.

d. Index-Reference Designation Cross-Reference to Page Number - Section *V*. Not applicable.

1-3. Explanation of Columns

The following provides an explanation of columns in the tabular lists:

a. Source, Maintenance, and Recoverability Codes (SMR), Column 1.

(3) Source code indicates the selection status and source for the listed item. Source codes are;

- P** - Repair parts which are stocked in or supplied from the GSA/DSA or Army supply system and authorized for use at indicated maintenance categories.
- P 2** - Repair parts which are procured and stocked for insurance purposes because the combat or military essentiality of the end item dictates that a minimum quantity be available in the supply system.
- P 9** - Assigned to items which are NSA design controlled: unique repair parts, special tools, test, measuring and diagnostic equipment, which are stocked and supplied by the Army COMSEC logistic system, and which are not subject to the provisions of AR 380-41.
- P 10** - Assigned to items which are NSA design controlled: special tools, test, measuring and diagnostic equipment for COMSEC support, which are accountable under the

provisions of AR 380-41, and which are stocked and supplied by the Army COMSEC logistic system.

- M** - Repair parts which are not procured or stocked, but are to be manufactured at indicated maintenance levels.
 - A** - Assemblies which are not procured or stocked as such, but are made up of two or more units. Such component units carry individual stock numbers and descriptions, are procured and stocked separately and can be assembled to form the required assembly at indicated maintenance categories.
 - X** - Parts and assemblies which are not procured or stocked and the mortar of which normally is below that of the applicable end item or component. The failure of such part or assembly should result in retirement of the end item from the supply system.
 - X1** - Repair parts which are not procured or stocked. The requirement for such items will be filled by use of the next higher assembly or component.
 - X2** - Repair parts which are not stocked. The indicated maintenance category requiring such repair parts will attempt to obtain same through cannibalization. Where such repair parts are not obtainable through cannibalization, requirements will be requisitioned, with accompanying justification, through normal supply channels.
 - G** - Major assemblies that are procured with PEMA funds for initial issue only as exchange assemblies at DSU and GSU level. These assemblies will not be stocked above DS and GS level or returned to depot supply level.
- (2) Maintenance code indicates the lowest category of maintenance authorized to install the listed item. The maintenance level codes are:
- | <i>Code</i> | <i>Explanation</i> |
|-------------|----------------------------|
| C | Operator/crew |
| 0 | Organizational maintenance |

(3) Recoverability code indicates whether unserviceable items should be returned for recovery or salvage. Items not coded are expendable. Recoverability codes are:

Code	Explanation
R -	Repair parts and assemblies that are economically repairable at DSU and GSU activities and are normally furnished by supply on an exchange basis.
S -	Repair parts and assemblies which are economically repairable at DSU and GSU activities and which normally are furnished by supply on an exchange basis. When items are determined by a GSU to be uneconomically repairable, they will be evacuated to a depot for evaluation and analysis before final disposition.
T -	High dollar value recoverable repair parts which are subject to special handling and are issued on an exchange basis. Such repair parts normally are repaired or overhauled at depot maintenance activities.
U -	Repair parts specifically selected for salvage by reclamation units because of precious metal content, critical materials, or high dollar value reusable casing or castings.

b. **Federal Stock Number, Column 2.** Indicates the Federal stock number assigned to the item and will

be used for requisitioning purposes.

c. **Description, Column 3.** Indicates the Federal item name and any additional description of the item required. A part number or other reference number is followed by the applicable five-digit Federal supply code for manufacturers in parentheses.

d. **Unit of Measure (U/M), Column 4.** A two-character alphabetic abbreviation indicating the amount or quantity of the item upon which the allowances are based; e.g., ft, ea, pr, etc.

e. **Quantity Incorporated in Unit, Column 5.** Indicates the quantity of the item used in the assembly group. Subsequent appearances of the same item in the same assembly are indicated by the letters "REF".

f. **Allowances (15-Day Organizational Maintenance), Column 6.** Items authorized for requisition as required are identified by an asterisk in the allowance column.

g. **Illustrations, Column 7.** This column is divided as follows:

(1) **Figure number, Column 7a.** Indicates the figure number of the illustration in which the item is shown.

(2) **Item number or reference designation, Column 7b.** Indicates the reference designation used to identify the item in the illustration.

1-4. Special information

The following publication pertains to Attitude Control Test Set TS-1656/ASW-12 (V):

TM 11-6625-519-12 Operator and Organizational Maintenance Manual: Test Set, Altitude Control TS-1643/ASW-120(V); Test Set Displacement Gyroscope TS-1644/ASW-12(V); Vibrating Machine, Gyroscope MX-3722/ASW-12(V); Fixture, Test Gyroscope MX-3723/ASW-12(V); Test Set, Attitude Reference Control TS-1659/ASW-120; Test Set, Coupler TS-1661/ASW-12(V); Test Set, Coupler TS-1652/ASW-120; Test Set, Collective Pitch Command Control TS-1651/ASW-12(V); Test Set, Altitude Control TS-1656/ASW-12(V); Test Set, Automatic Controller TS-1658/ASW-12(V); Test Set, Rotary Transducer TS-1657/ASW-12(V); Test Set, Gyro Control TS-1660/ASW-120; Table, Tilting, Gyro Instrument Testing MX-4708/ASW-12(V); Fixture, Test, Accelerometer MX-4043/ASW-12(V); Test Set, Interlock Control TS-1738/ASW-12(V); Test Set, Directional Control Panel-Acceleration Monitor TS-1912/ASW-12(V).

1-5. Location of Repair Parts

This manual does not contain cross-reference indexes. To locate a repair part, identify the part in the illustration and scrutinize column 3 of the repair parts list (sec II).

1-6. Federal Supply Codes for Manufacturers

Code	Manufacturer
81349	Military Specifications
96906	Military Standards

1-7. Reporting of Equipment Publication

Improvements

The reporting of errors, omissions, and recommendations for improving this publication by the individual user is encouraged. Reports should be submitted on DA Form 2028 (Recommended Changes to Publications and Blank Forms) and forwarded direct to Commander, US Army Electronics Command, ATTN: AMSEL-MA-A, Fort Monmouth, NJ 07703.

T M 1 1 - 6 6 2 5 - 5 1 9 - 2 0 P - 4

SECTION II REPAIR PARTS FOR ORGANIZATIONAL MAINTENANCE

(1) SMR CODE	(2) FEDERAL STOCK NUMBER	(3) DESCRIPTION Reference Number & Mfr Code	(4) UNIT OF MEAS	(5) QTY INC IN UNIT	(6) 15-DAY ORGANIZATIONAL MAINTENANCE ALLOW				(a) FIG NO.	(7) ILLUSTRATION (b) ITEM NO. OR REFERENCE DESIGNATION	
					(a) 1-5	(b) 6-20	(c) 21-50	(d) 51-100			
	6625-973-418	6 TEST SET, ATTITUDE CONTROL TS-1656/ASW-12(V) (THIS ITEM IS NONEXPENDABLE)									A1
P-0	5920-280-446	5 FUSE, CARTRIDGE FO2A250VIAS (81349)	EA	1	*	*	*	*	2-1		A1F2
P-0	5920-474-6125	5 FUSE, CARTRIDGE FO2A250V2AS (81349)	EA	1	*	*	*	*	2-1		A1F1
P-0	5355-556-0145	3 KNOB MS91528-1K2B (96906)	EA	4	*	*	*	*	2-1		A1H6
F-0		LAMP, GLOW NE51 (81349)	EA	1	*	*	*	*	2-1		A1DS2
P-0	6240-155-8714	LAMP, INCANDESCENT MS15571-4 (96906)	EA	3	*	*	*	*	2-1		A1DS1
P-0	6240-155-8714	LAMP, INCANDESCENT MS15571-4 (96906)	EA	REF	*	*	*	*	2-1		A1DS3
P-0	6240-155-8714	LAMP, INCANDESCENT MS15571-4 (96906)	EA	REF	*	*	*	*	2-1		A1DS4

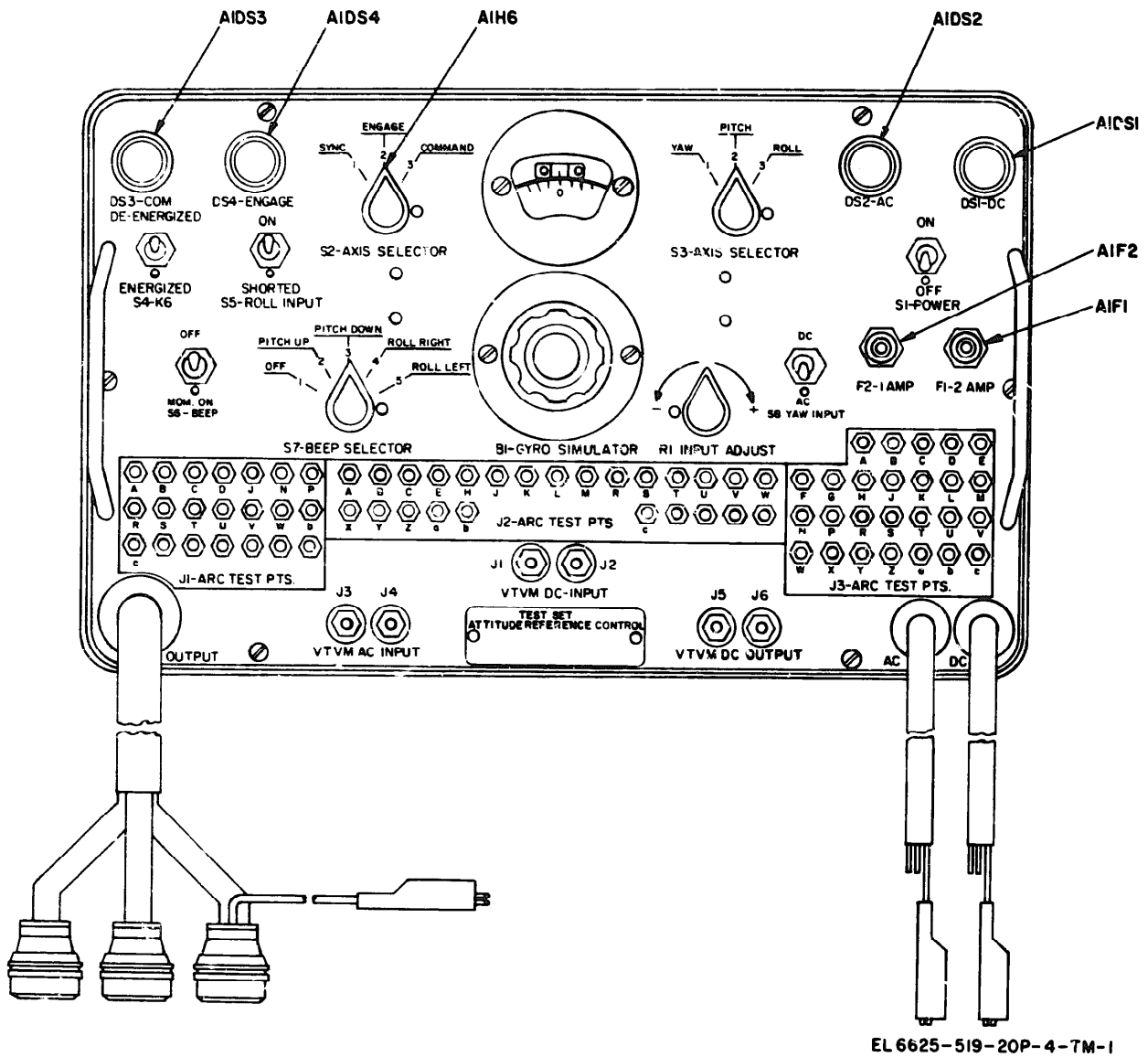


Figure 2-1. Test set, attitude control

By Order of the Secretary of the Army:

Official:

VERNE L. BOWERS

Major General, United States Army

The Adjutant General

CREIGHTON W. ABRAMS
General, United States Army
Chief of Staff

Distribution:

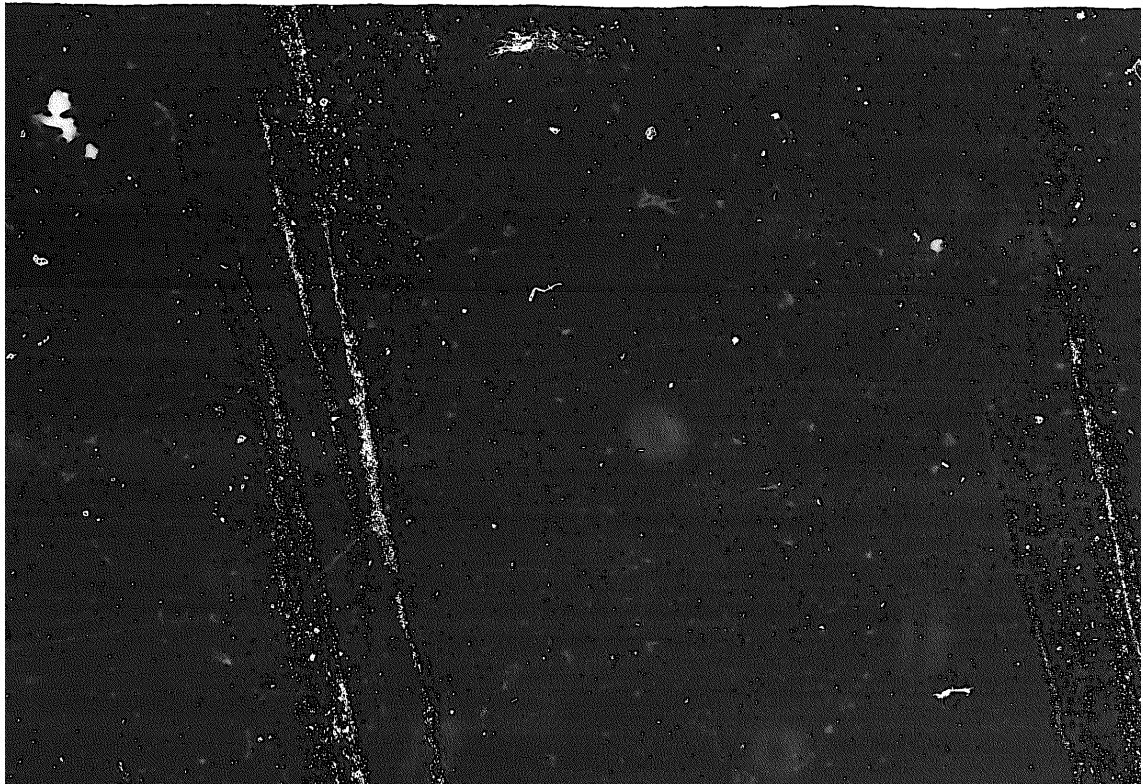
To be distributed in accordance with DA Form 12-36, (qty rqr block no. 233) Direct and General Support maintenance requirements for AN/ASW-12.

END

01-03-83

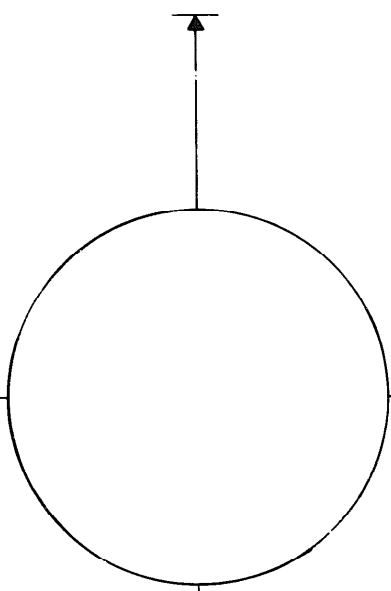
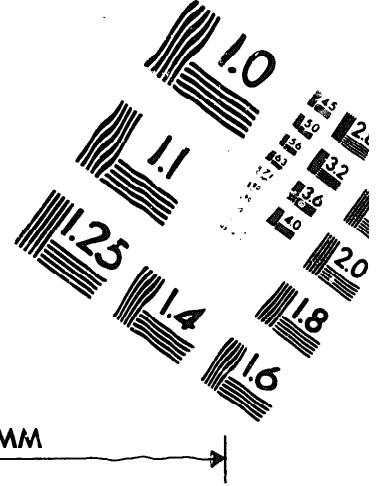
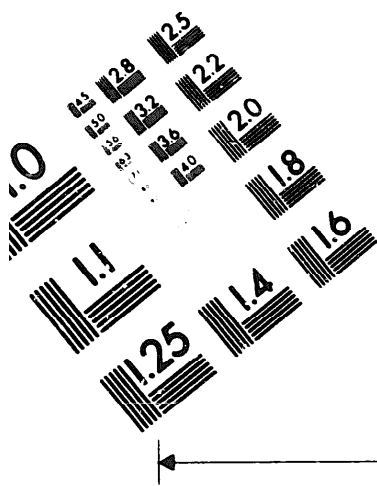
DATE





DEPARTMENT OF THE ARMY

MICROFORM
TEST TARGET



150 MM

1.0 mm (e= 81 mm)

ABCDEFGHIJKLMN O PQRSTU VWXYZ 1234567890
abcdefghijklmnopqrstuvwxyz \$%& /%# 1/2 1/4 3/4 — = + x & @ *

1.5 mm (e= 1.09 mm)

ABCDEFGHIJKLMN O PQRSTU VWXYZ 1234567890
abcdefghijklmnopqrstuvwxyz \$%& /%# 1/2 1/4 3/4 — = + x & @ *

2.0 mm (e= 1.37 mm)

ABCDEFGHIJKLMN O PQRSTU VWXYZ
abcdefghijklmnopqrstuvwxyz
1234567890 \$%& /%# 1/2 1/4 3/4 — = + x & @ *

2.5 mm (e= 1.77 mm)

ABCDEFGHIJKLMN O PQRSTU VWXYZ
abcdefghijklmnopqrstuvwxyz
1234567890 \$%& /%# 1/2 1/4 3/4 — = + x & @ *

1.0 mm (e= 81 mm)

ABCDEFGHIJKLMN O PQRSTU VWXYZ 1234567890
abcdefghijklmnopqrstuvwxyz \$%& /%# 1/2 1/4 3/4 — = + x & @ *

1.5 mm (e= 1.09 mm)

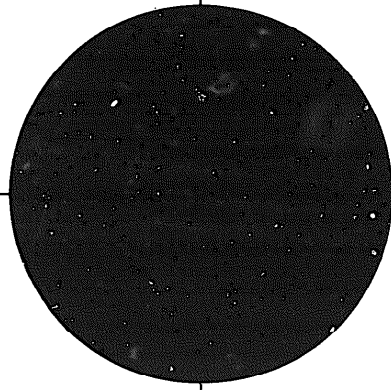
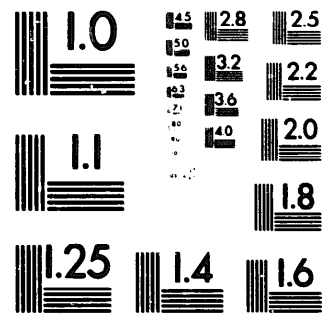
ABCDEFGHIJKLMN O PQRSTU VWXYZ 1234567890
abcdefghijklmnopqrstuvwxyz \$%& /%# 1/2 1/4 3/4 — = + x & @ *

2.0 mm (e= 1.37 mm)

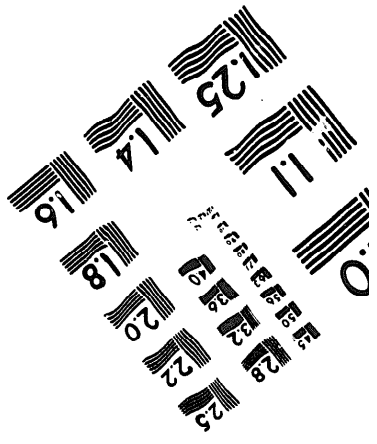
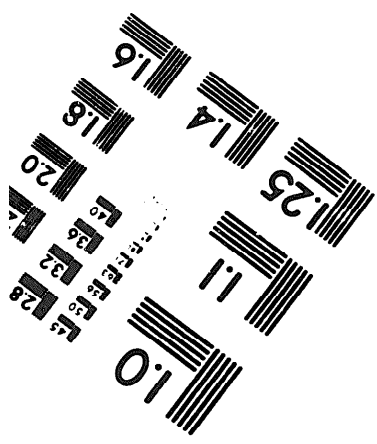
ABCDEFGHIJKLMN O PQRSTU VWXYZ
abcdefghijklmnopqrstuvwxyz
1234567890 \$%& /%# 1/2 1/4 3/4 — = + x & @ *

2.5 mm (e= 1.77 mm)

ABCDEFGHIJKLMN O PQRSTU VWXYZ
abcdefghijklmnopqrstuvwxyz
1234567890 \$%& /%# 1/2 1/4 3/4 — = + x & @ *



200 MM



250 MM